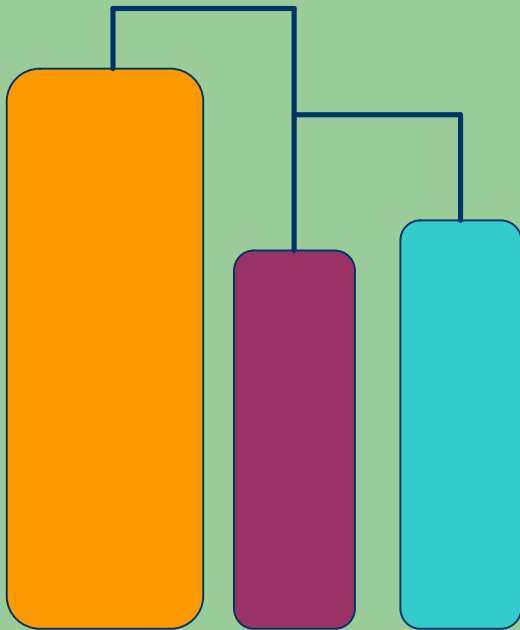


# Biodiesel production and IPPC

How to apply for your permit and keep the Environment Agency happy



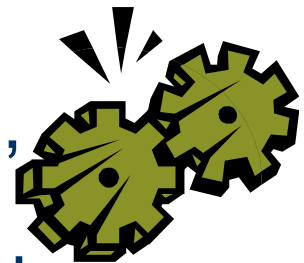
# What is IPPC and how does it affect me?

- Integrated pollution prevention and control applies to hundreds of industrial processes including iron and steel, food, waste treatment and chemicals
- If it's a listed process you need a permit to operate
- Applies to biodiesel if you produce over 100 litres a week



# What is IPPC and how does it affect me?

- IPPC is a means of controlling the more potentially polluting industries
- Issues which have possible environmental impact; raw materials, emissions to air, water, land, wastes, storage techniques, monitoring, energy, noise, odour, and management procedures are scrutinised
- All aspects to be best available techniques (BAT) as in guidance notes



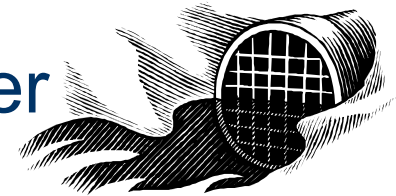
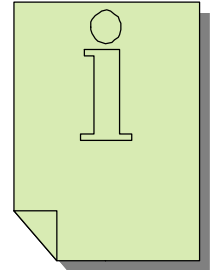
# What is IPPC and how does it affect me?

- You must apply for a permit from the Environment Agency (or SEPA)
- Must be in place before commencing production
- Existing operations should have applied by August 2005



# Low impact permit

- Less information needed, cheaper application fee (£2760 vs. £20,000)
- Minimal management effort must be needed to comply
- Under 20m<sup>3</sup> day effluent to water
- No abatement
- No effluent to groundwater



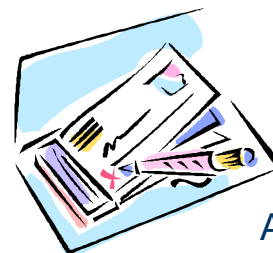
# Low impact permit

- Under 1 tonne/day, 1% hazardous waste
- Under 1MW energy capacity
- Limit on storage – methanol under 25 tonnes
- No noise nuisance
- No significant releases e.g. methanol vapour
- No odour nuisance



# How do I get an IPPC permit?

- See Environment Agency web site
- Get the Environment Agency information pack on CD
- Consult with EA local officer
- Complete the electronic form along with supplementary documents
- Get site report done
- Submit forms with fee



# The application form

- Contact details
- Describe process – understand chemistry
- Emissions to air
- Emissions to water (river, sewer, ground)
- Storage techniques
- Raw materials usage, water
- Waste handling and disposal



# The application form

- Energy
- Noise
- Management and accident plan
- Odour
- Monitoring methods
- Locate potential receptors
- Improvement programme



# Site report



- Aim is to ensure that when operator leaves that land is left in no worse condition
- Geology – potential pathways
- Historic records
- Assessment of likelihood of land pollution



# The options - DIY or get help?



- Main details are on the CD, on EA website and from the local officer, so DIY possible
- Some of site report can also be DIY, but probably not geological interpretation
- Consultant – part help at daily rate
- Full service – ca £7000-9000 + application fee, including site report

# Andrew Vevers Environmental Consultants

- Consultant for 16 years – Sheffield and York
- Environmental protection officer South Yorkshire 15 years
- 18 IPPC permits
- Good relationship with Environment Agency
- Working with PPC UK who can offer complementary services to biodiesel industry